

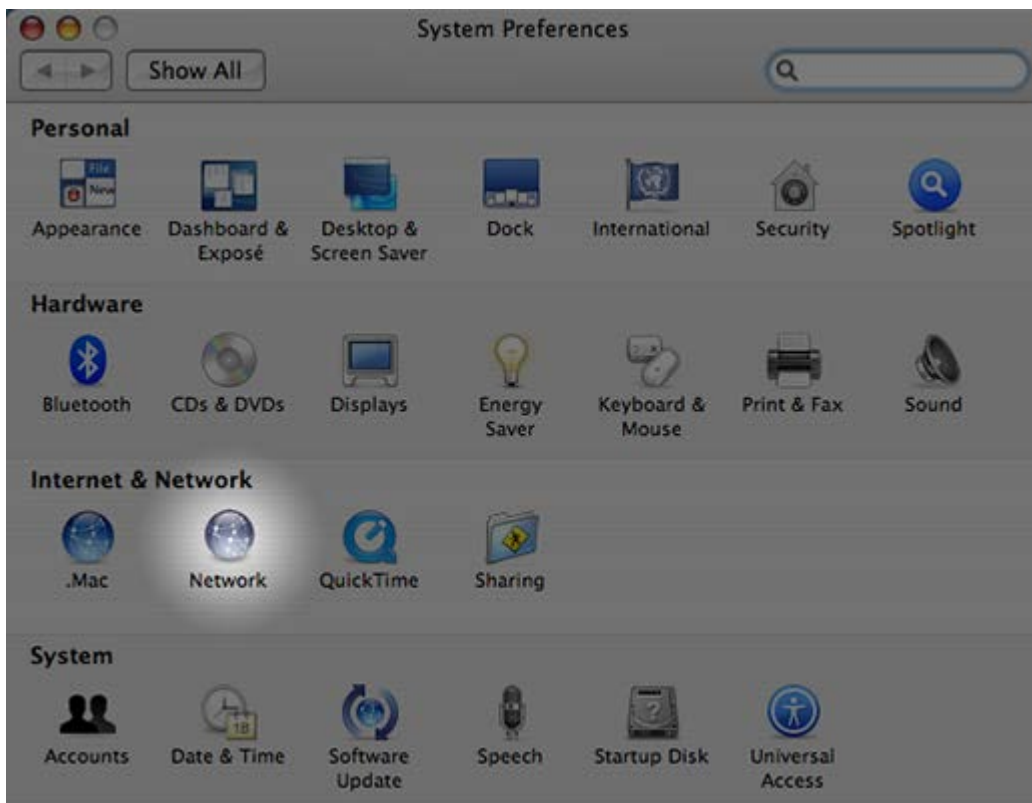
## Setup Guide - PPPoE – Mac V1

---

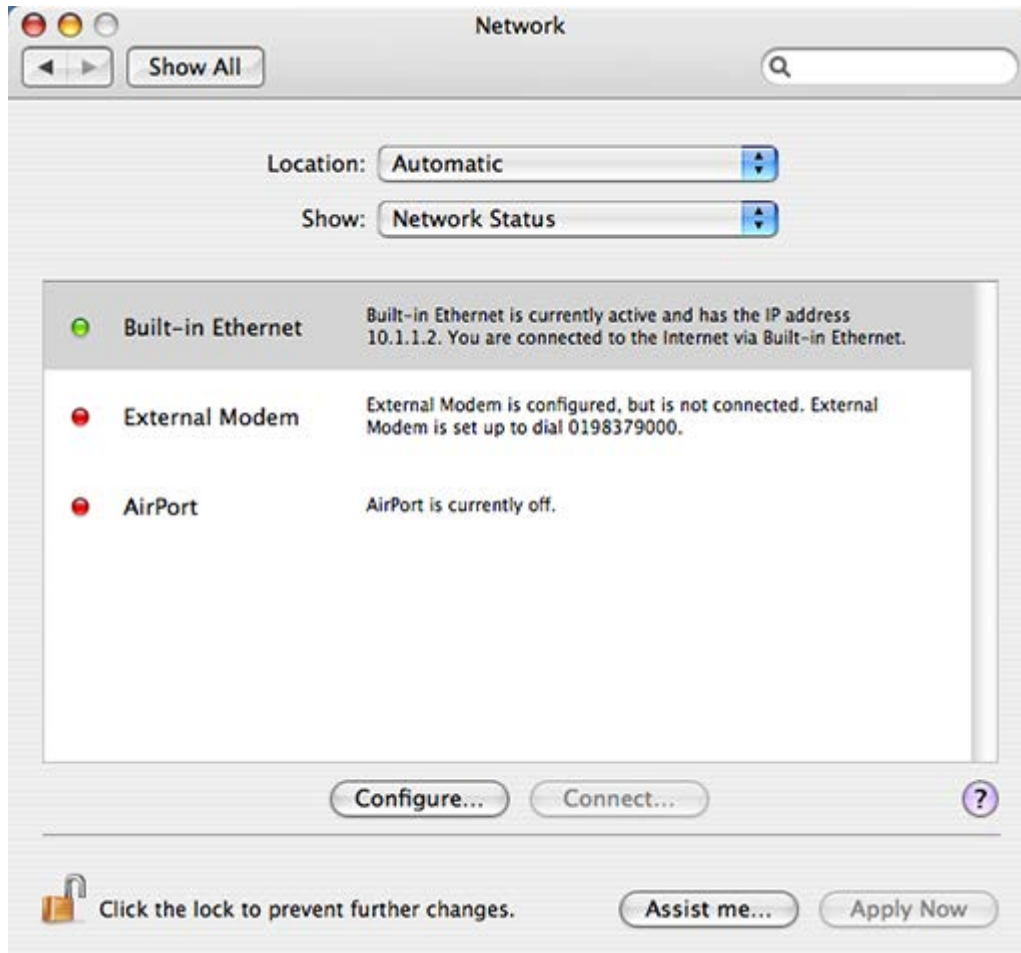
To set your Mac to connect via PPPoE, go to "System Preferences" by either selecting it from Apple icon in the top menu bar or from the Dock.



Click the "Network" icon to continue.

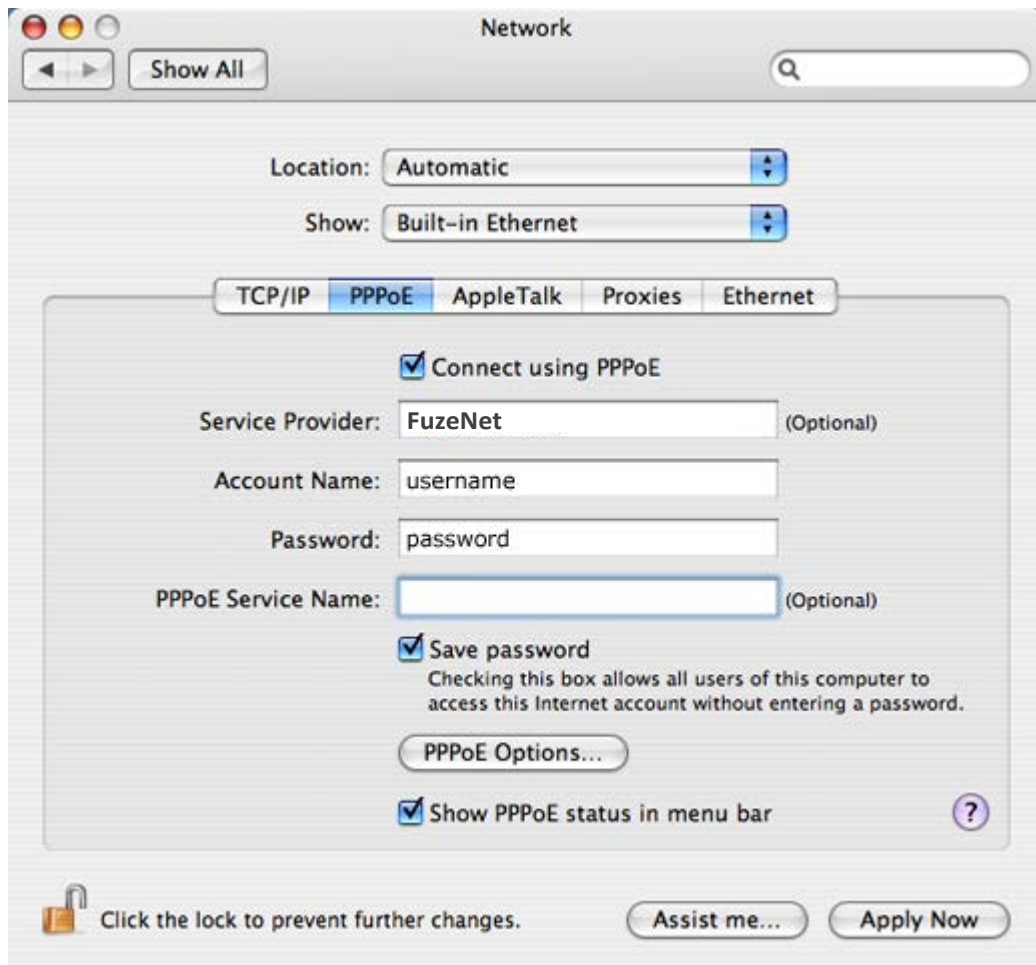


Select "Built-in Ethernet" from the dropdown labelled "Show".



Select the tab labelled "PPPoE" and ensure you have completed the following:

- Tick the box labelled "Connect using PPPoE".
  - Service Provider should be "FuzeNet".
  - Enter your username and password. Make sure you use the full email address for the username.
  - PPPoE Service Name should be "selements".
  - Tick "Show PPPoE status in menu bar"; a small icon will appear in your top menu bar.
- Click "Apply Now".



The icon highlighted below should now be visible in the top right of your screen. This will allow you to activate the connection.

Once connected to the Internet, you can also use the same icon to disconnect.

