

## Setup Guide - PPPoE – Mac V3

---

1. Go to the Apple menu and choose System Preferences.



2. Double-click the Network icon in the Internet & Wireless section.



3. In the left-hand panel you will see listed Ethernet, AirPort, etc. Click the "+" sign under that panel.

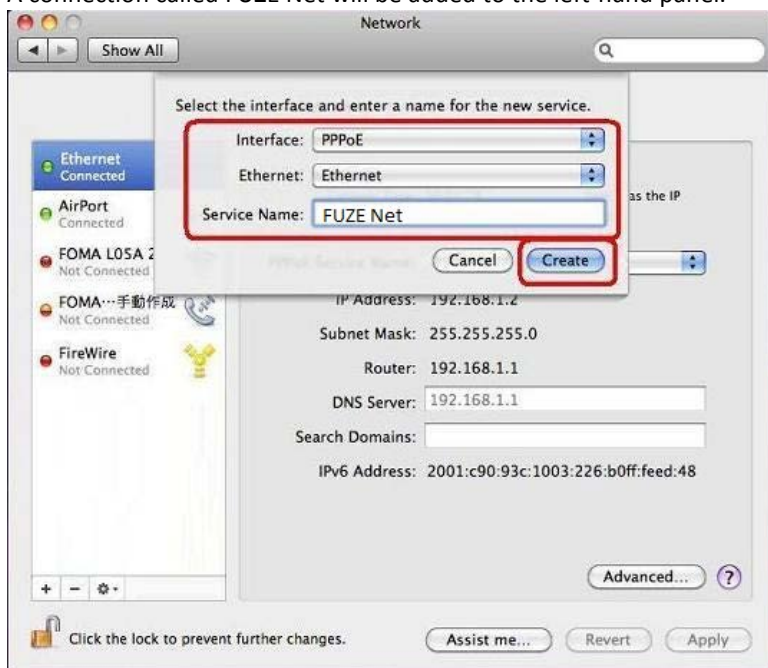


4. In the window that appears, supply the following information:

Interface	PPPoE
Ethernet	Ethernet
Service Name	Fuze Net

Click the Create button.

A connection called FUZE Net will be added to the left-hand panel.

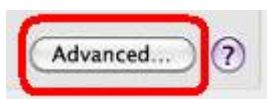


5. Click on the FuzeNet entry and supply the following information:

PPPoE Service Name	Blank
Account Name	Your FuzeNet User ID * Enter your User ID in lower case (small) characters
Password	The password for your FuzeNet User ID * Enter your Password in lower case (small) characters
Remember this password	Arbitrary
Show PPPoE status in menu bar	Check this



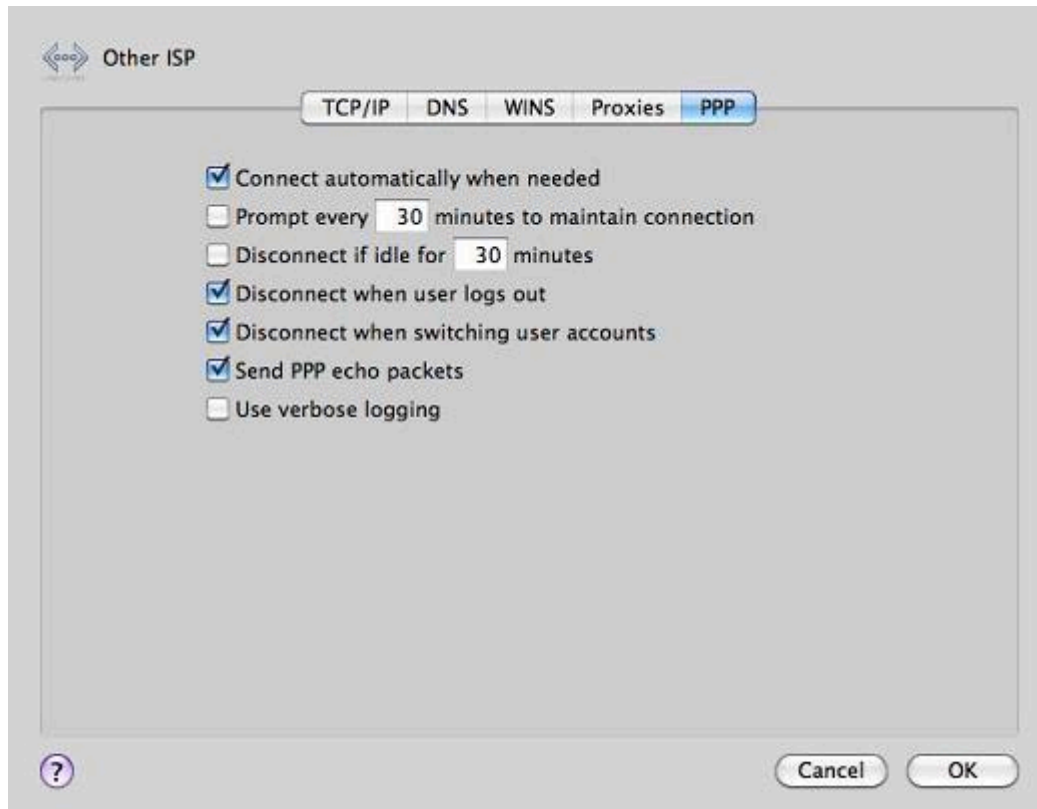
6. Click the Advanced button.



7. Click the PPP tab and supply the following information:

Connect automatically when needed	Check this
Send PPP echo packets	Check this
All other check boxes are arbitrary.	

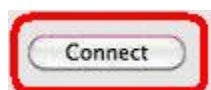
8. Click the OK button.



9. Click the Apply button.



10. Click the **Connect** button.



11. A connection should now be established between your computer and the Internet. Open a Web browser and start viewing Web pages.



12. Another way to connect or disconnect is to use the <\*\*\*>icon in the menu bar and choose to connect or disconnect from the Internet.

