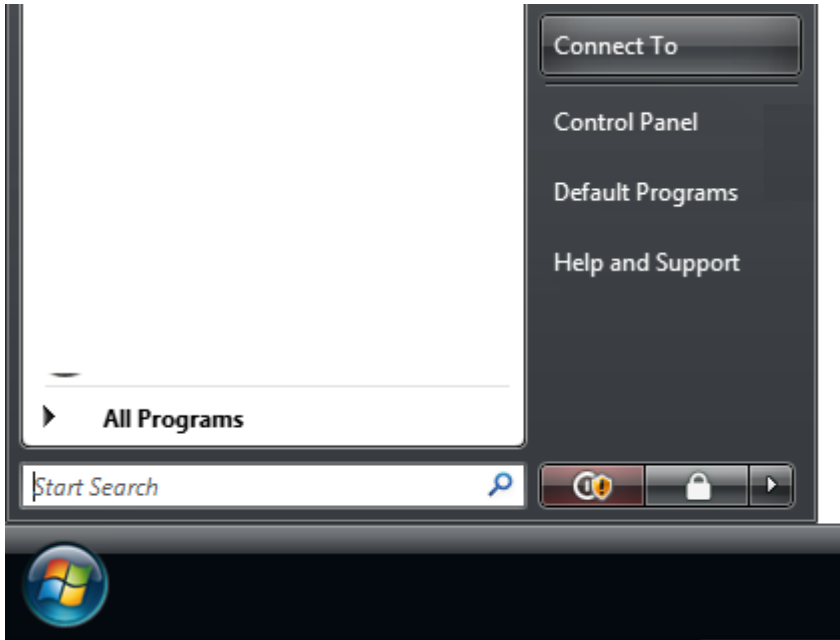


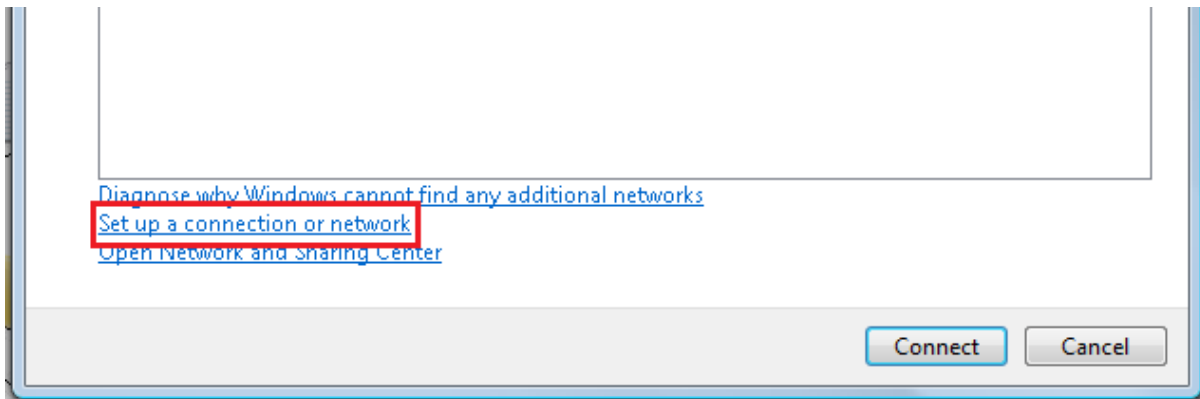
## Setup Guide - PPPoE – Win Vista

---

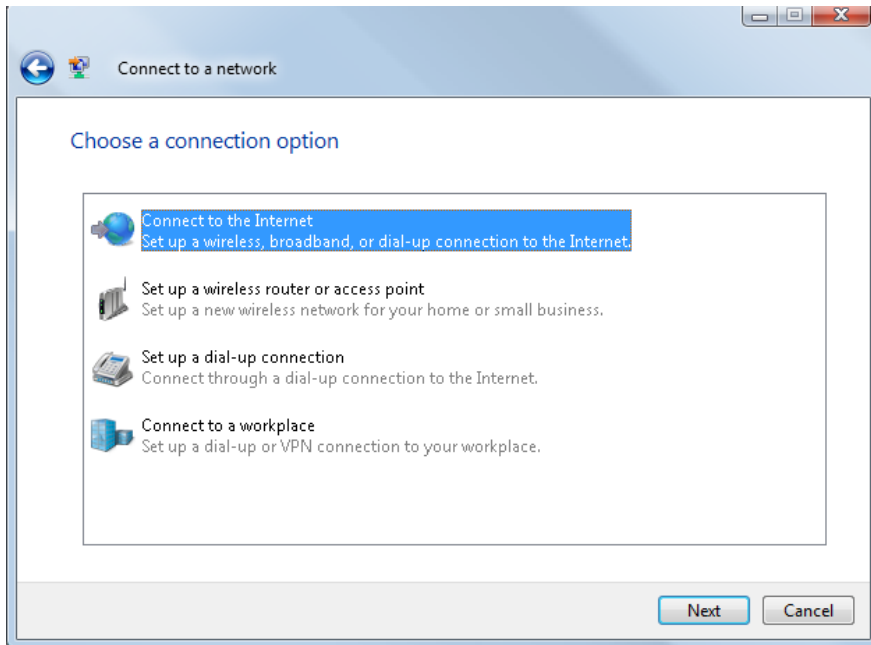
1. Press “Start bubble” down the bottom left hand corner of your screen. Then click “Connect To”.



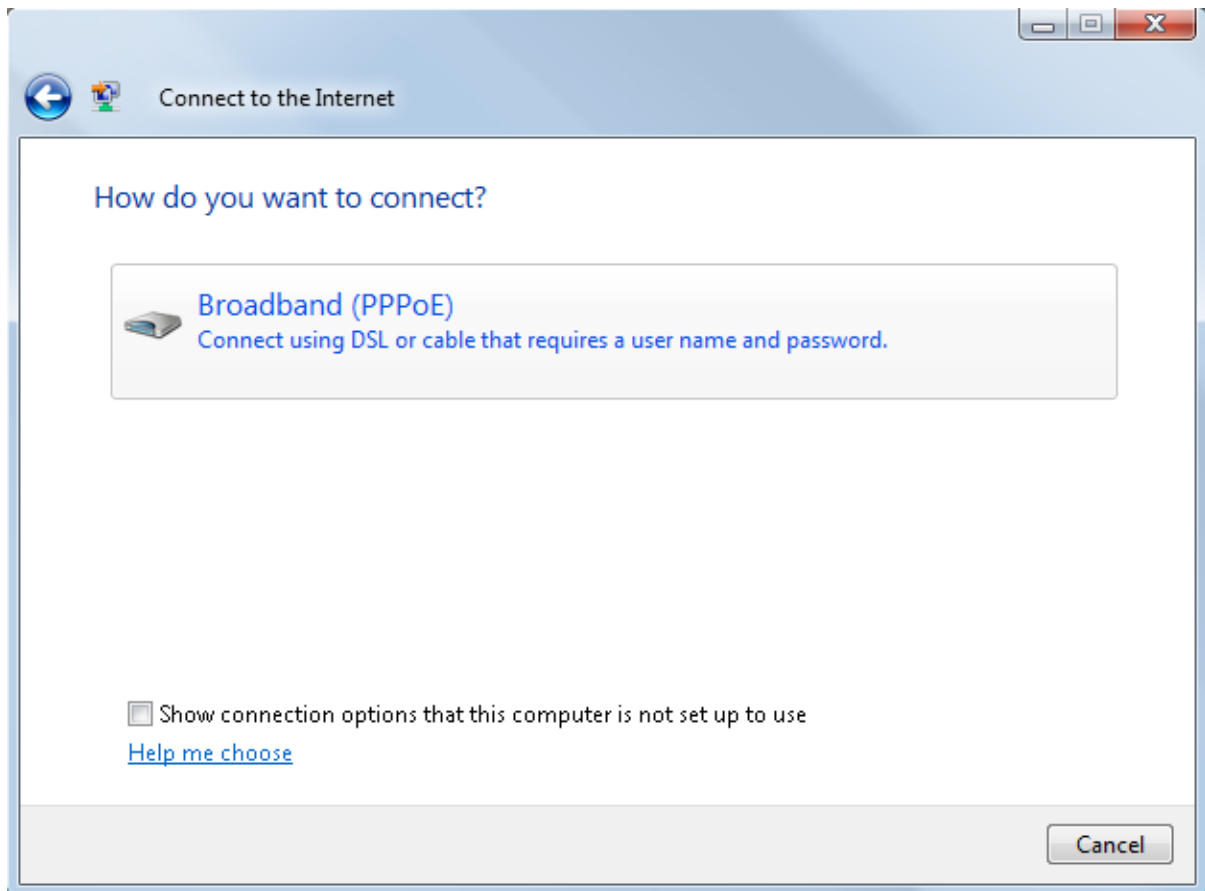
2. Press the “Set up a connection or network” link at the bottom of the following screen.



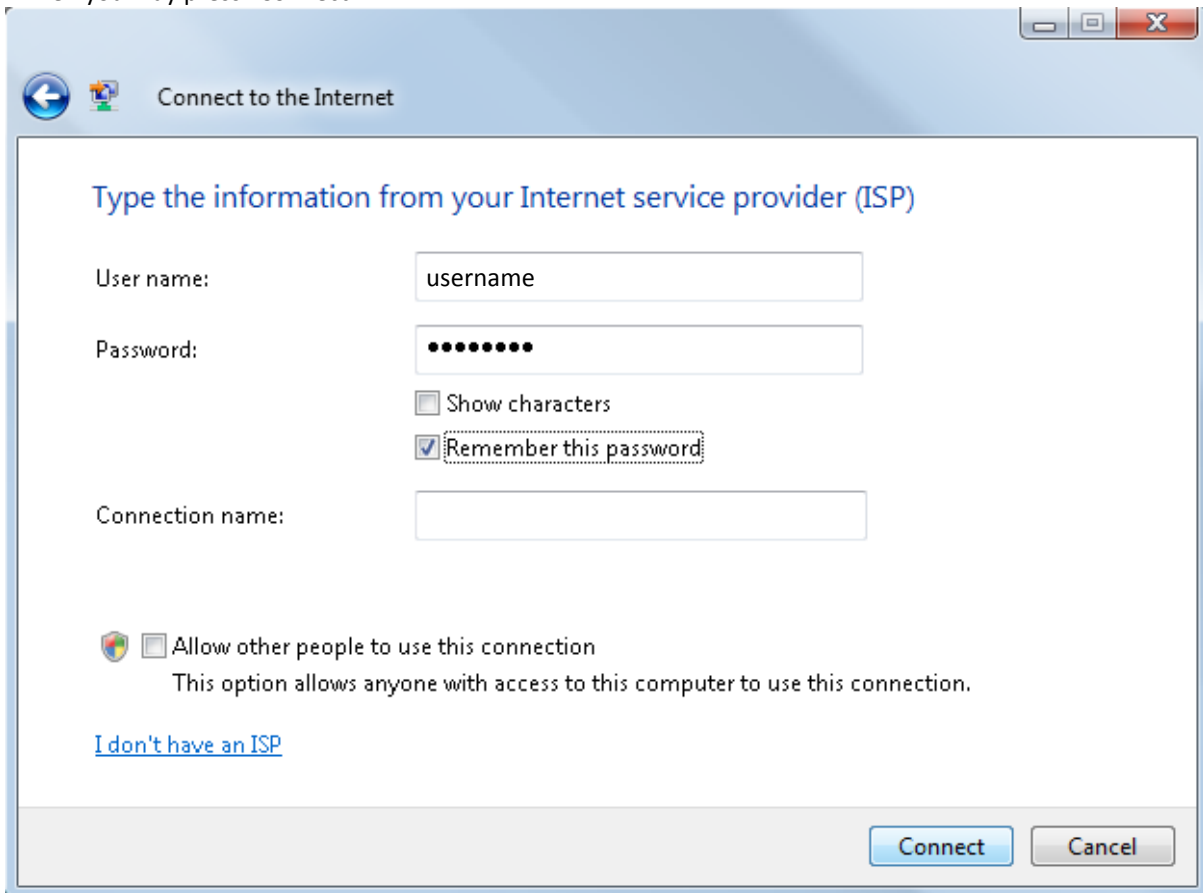
3. Select "Connect to the Internet". Then press "Next".



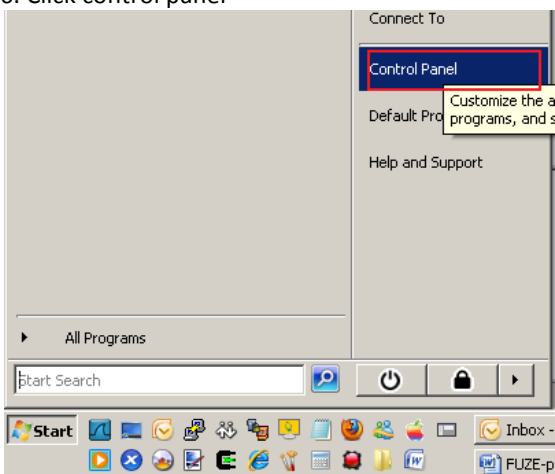
4. Select "Broadband (PPPoE)"

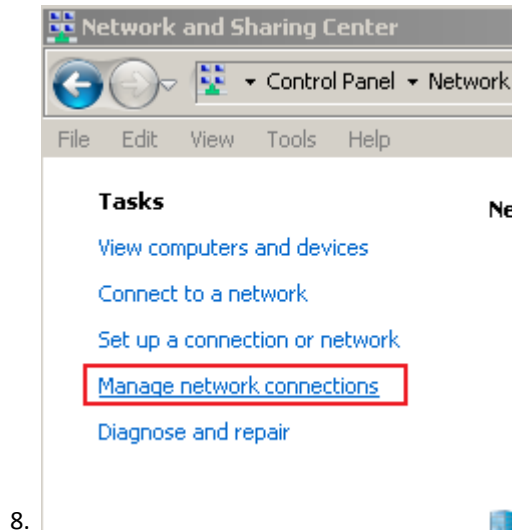


- At the following screen (shown below), enter in:  
 User name: (Your FuzeNet username). Make sure you use the full email address for the username.  
 Password: (Your FuzeNet password)  
 Show characters: Leave unticked  
 Remember this Password: Ticked  
 Connection name: FuzeNet  
 Then you may press "Connect"

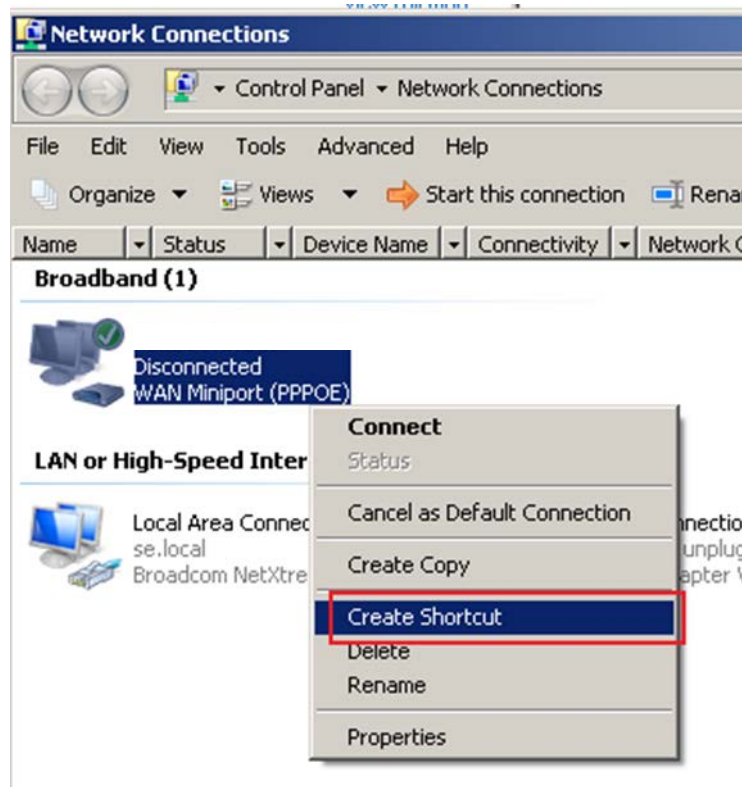


- Click control panel

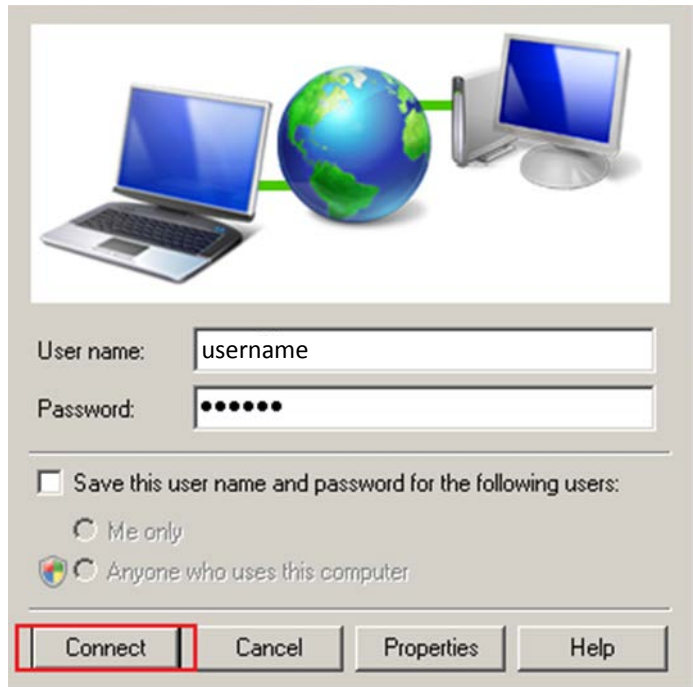




9. The below step will create a shortcut on the user's desktop so that they may easily re-connect.



10. Once the user clicks this shortcut they will receive the following screen. Get them to click connect.



NOTE: If the user's PC is unable to get to these screens due to viruses ETC refer them to their local PC shop.