

Setup Guide - PPPoE – Windows 7

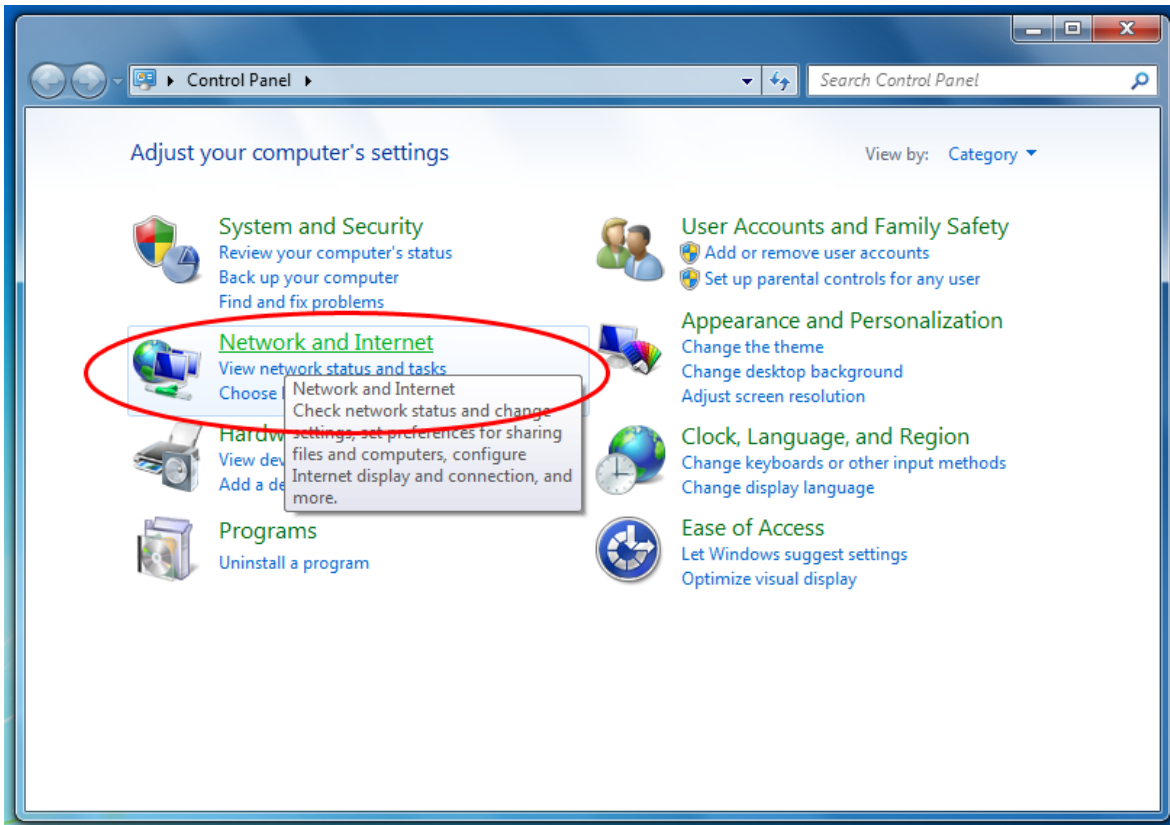
1. Click the **Windows 7 Orb**.



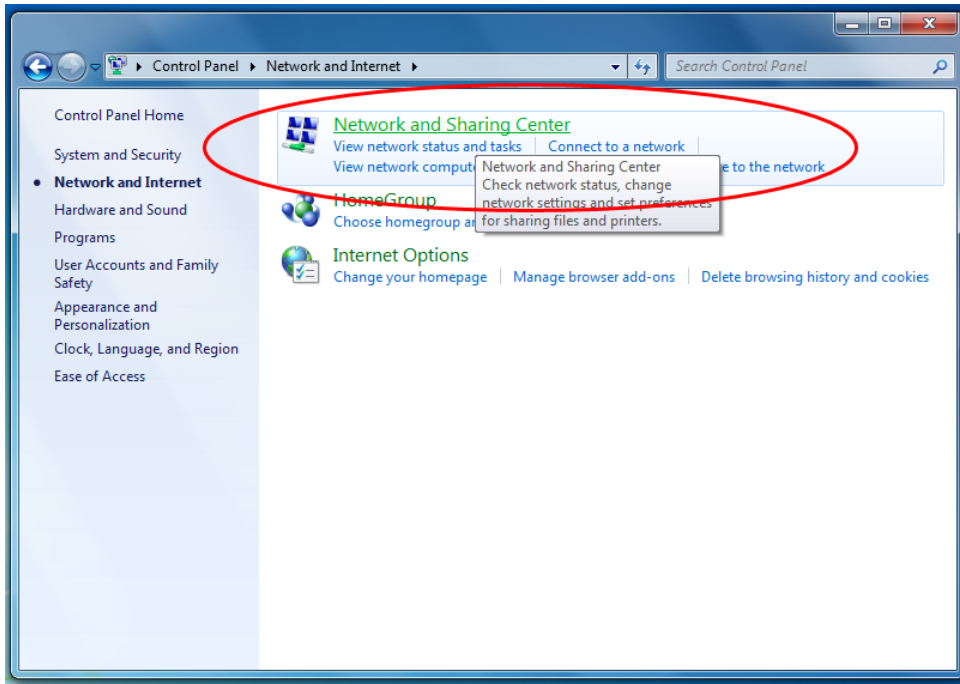
2. Click Control Panel.



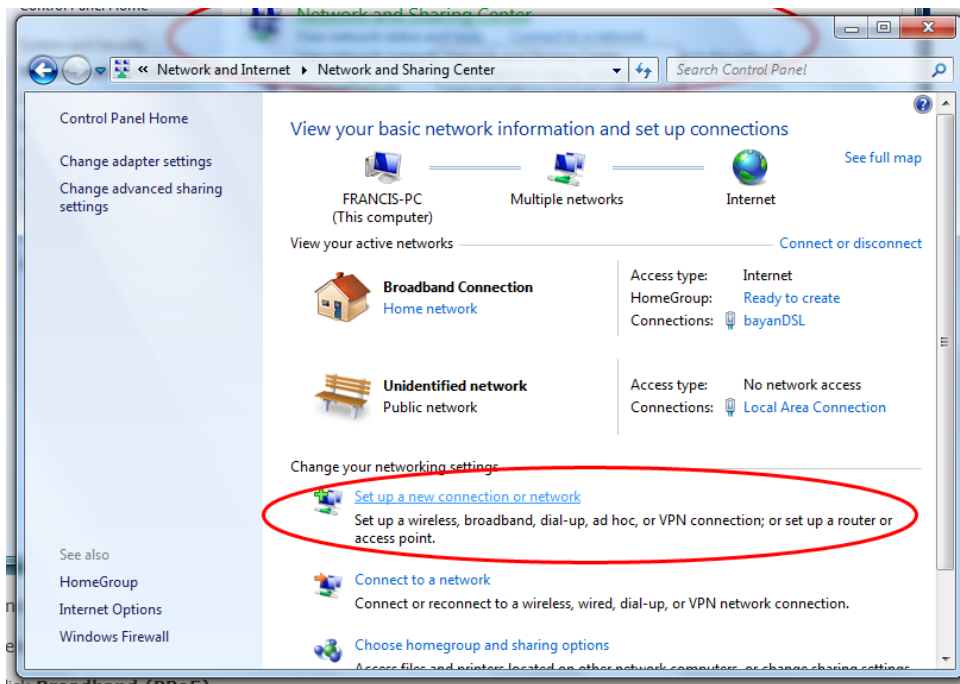
3. Click **Network and Internet**.



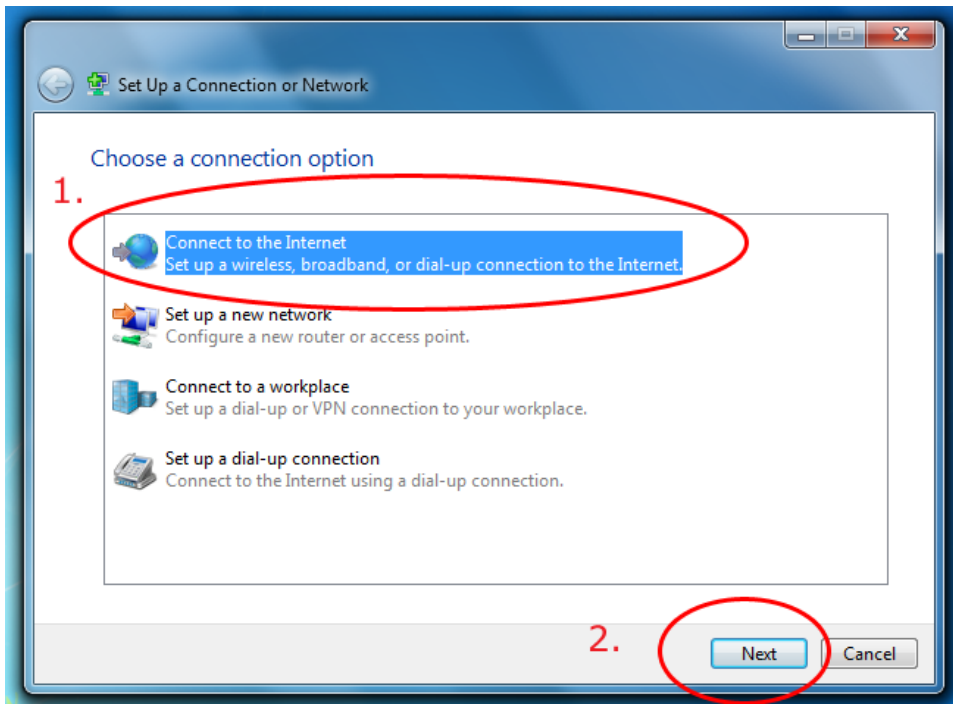
4. Click **Network and Sharing Center**.



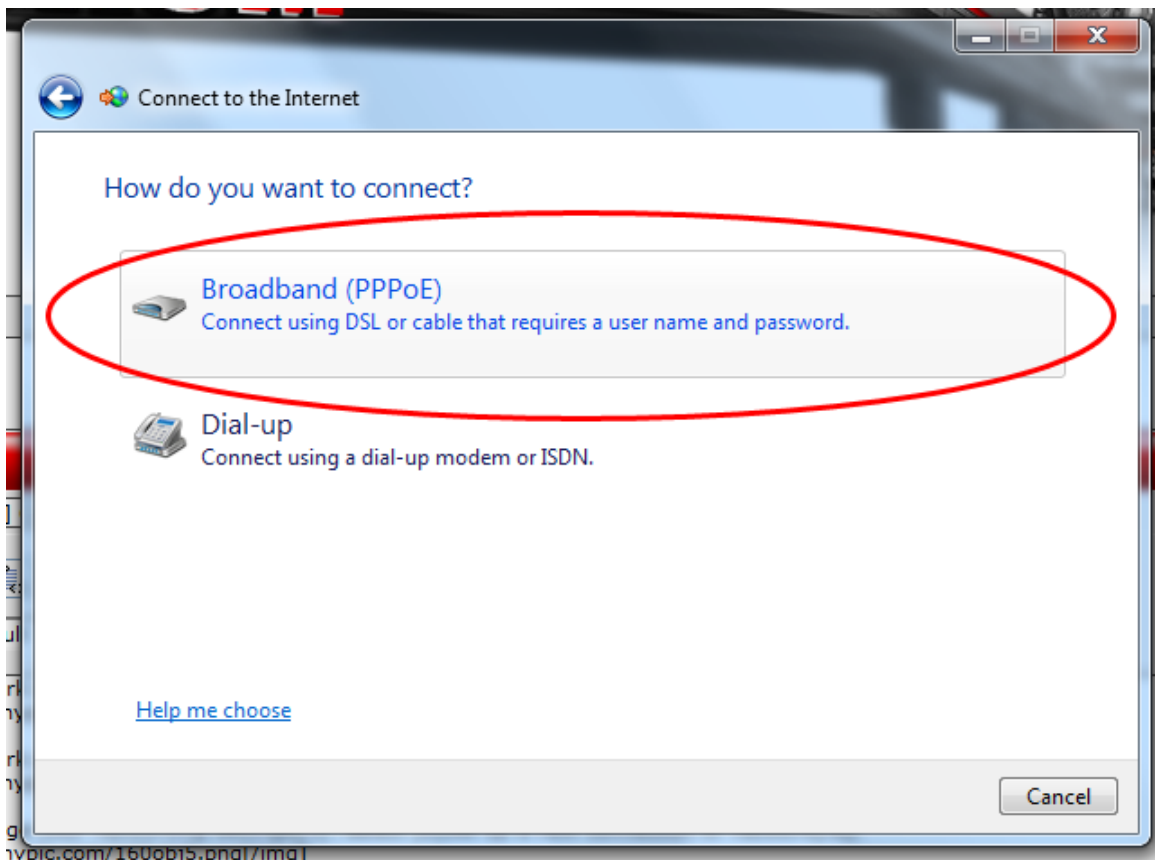
5. Under 'Change your networking settings', select **Set up a new connection or network**.



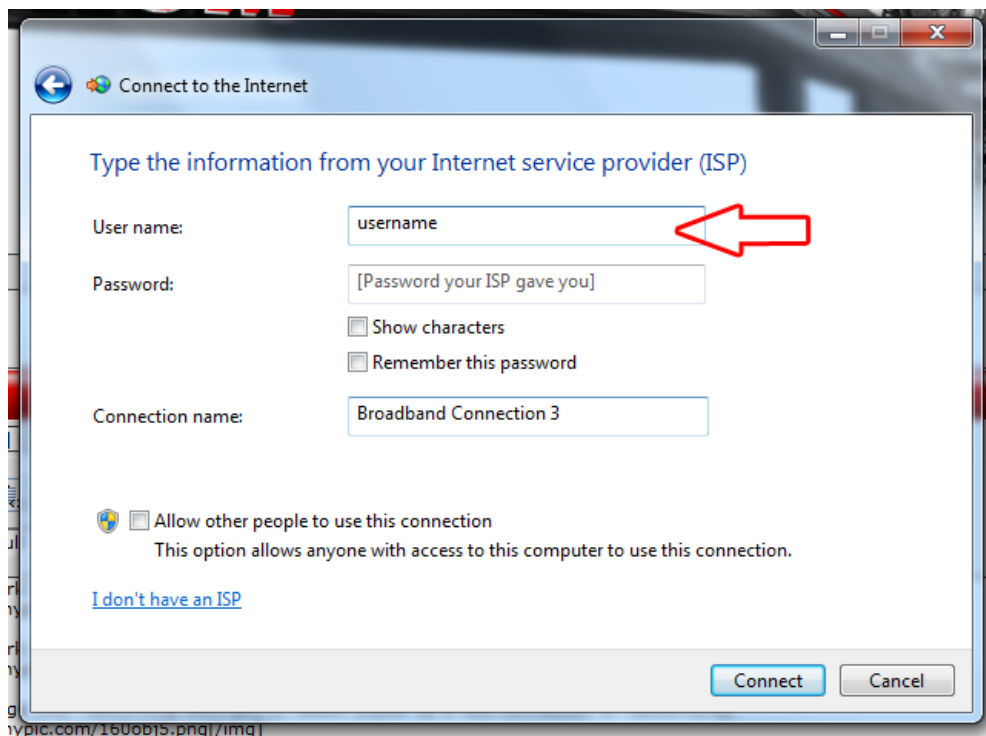
6. Select **Connect to the Internet** and click **Next**.



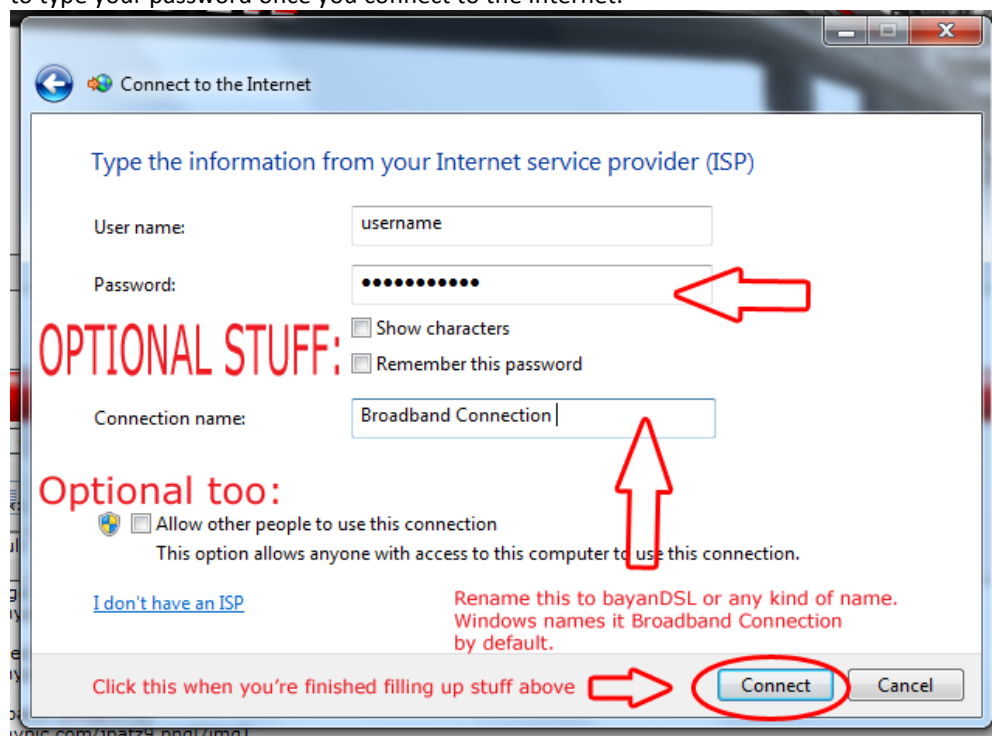
7. Click Broadband (PPoE).



8. Type your username. Make sure you use the full email address for the username.



9. Type your password. Tick 'Show Characters' only if you want to look at the password you have typed or you are going to type. Not recommended if you care for your privacy; Tick 'Remember Password' if you don't want to type your password once you connect to the Internet.



10. Type the name of your Internet connection. This should be "selements".
11. Click on connect
12. Click Close and you're done.

